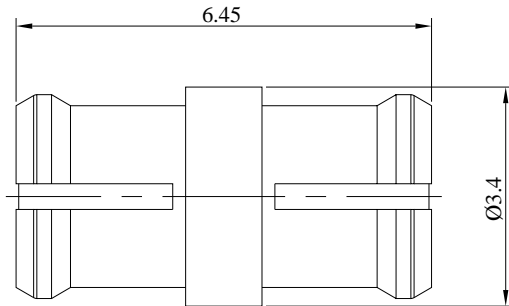


GPO(SMP) Female to GPO(SMP) Female Straight Adapter | DC to 18GHz | Length 6.45mm | Military-Standard Compliant

P/N: JGPO-KK6



Dimensions are in mm

### Product Configuration

	Connector 1	Connector 2
Connector Series	GPO(SMP)	GPO(SMP)
Connector Polarity	Standard	Standard
Connector Gender	Female	Female
Connector Impedance (Ohm)	50	50
Connector Body Material	Beryllium Copper	Beryllium Copper
Connector Body Plating	Gold	Gold
Body Style	Straight	Straight

### Electrical Specifications

Frequency	DC - 18GHz
VSWR / Return Loss	1.35 to 18GHz
Insertion Loss	$\leq 0.1 \times \text{Sqrt.}(f\_GHz)$

### Mechanical Data

Min. Mating Cycles	$\geq 500$
--------------------	------------

### Environmental Specifications

RoHS Compliant	Yes
Operating Temperature Range	-55 °C to +165 °C
MIL/STD	Compliant

### Test Report

