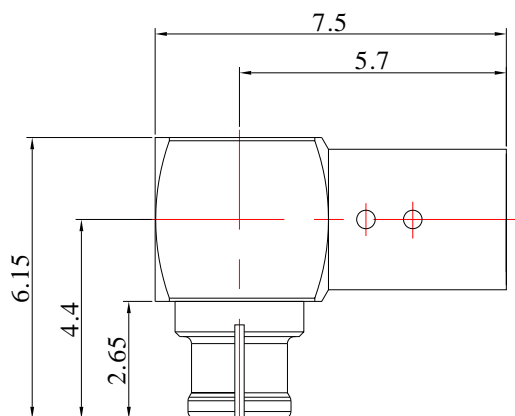


GPPO (Mini-SMP) Female Connector with Right Angle for .086" Series Cables | DC - GPPO-KWB2 50GHz



Dimensions are in mm



Product Configuration

Connector Series	GPPO(Mini-SMP)
Connector Polarity	Standard
Connector Gender	Female
Body Style	Right Angle
Termination Type	Coax
Connector Impedance (Ohm)	50
Mount Method	None

Mechanical Data

Min. Mating Cycles	≥500
Weight (g)	0.45 g
Body Material	Brass
Body Plating	Gold

Electrical Specifications

Frequency	DC - 50GHz
VSWR / Return Loss	1.1 to 6GHz, 1.23 to 12GHz, 1.32to 18GHz
Insertion Loss	≤ 0.1 x Sqrt.(f_GHz)

Enviromental Specifications

RoHS Compliant	Yes
Operating Temperature Range	-55 °C to +165 °C
MIL/STD	N/A