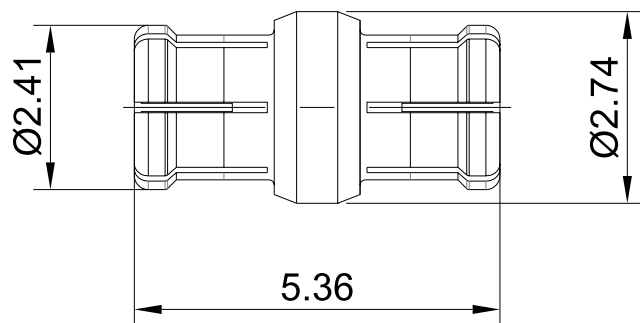


GPPO(Mini-SMP) Female to GPPO(Mini-SMP) Female Straight Precision Adapter | DC-65GHz

P/N: GPPO-KK



Dimensions are in mm

Product Configuration

	Connector 1	Connector 2
Connector Series	GPPO(Mini-SMP)	GPPO(Mini-SMP)
Connector Polarity	Standard	Standard
Connector Gender	Female	Female
Connector Impedance (Ohm)	50	50
Connector Body Material	Beryllium Copper	Beryllium Copper
Connector Body Plating	Gold	Gold
Body Style	Straight	Straight
Mount Method		None

Electrical Specifications

Frequency	DC - 65GHz
VSWR / Return Loss	1.44 to 50GHz
Insertion Loss	$\leq 0.1 \times \text{Sqrt}(f_GHz)$

Mechanical Data

Min. Mating Cycles	≥ 500
Weight (g)	0.1 g

Environmental Specifications

RoHS Compliant	Yes
Operating Temperature Range	-55 °C to +165 °C
MIL/STD	N/A

Test Report

