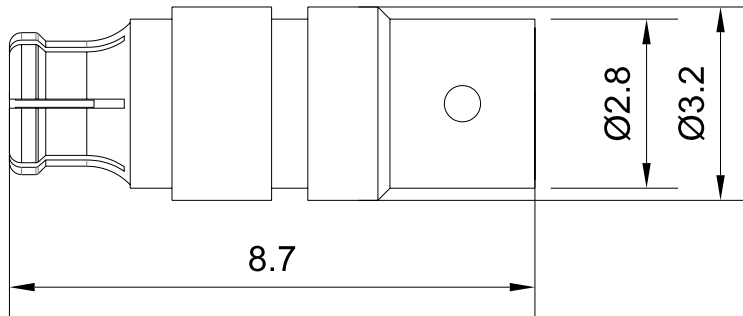


## GPPO (Mini-SMP) Female Connector for .086" Series Cables, DC - 65GHz

P/N: FR2-GPPO-KB2-3



Dimensions are in mm

### Product Configuration

Body Style	Straight
Connector Series	GPPO(Mini-SMP)
Connector Polarity	Standard
Connector Gender	Female
Termination Type	Coax
Connector Impedance (Ohm)	50
Mount Method	None

### Electrical Specifications

Frequency	DC-65GHz
VSWR	1.1 to 26.5GHz, 1.32 to 50GHz, 1.5 to 65GHz
Insertion Loss	$\leq 0.1 \times \text{Sqrt.}(f\_GHz)$

### Mechanical Data

Min. Mating Cycles	$\geq 500$
Weight	0.2 g
Body Material	Beryllium Copper
Body Plating	Gold

### Environmental Specifications

RoHS Compliant	Yes
Operating Temperature Range	-55 °C to +165 °C
MIL/STD	N/A