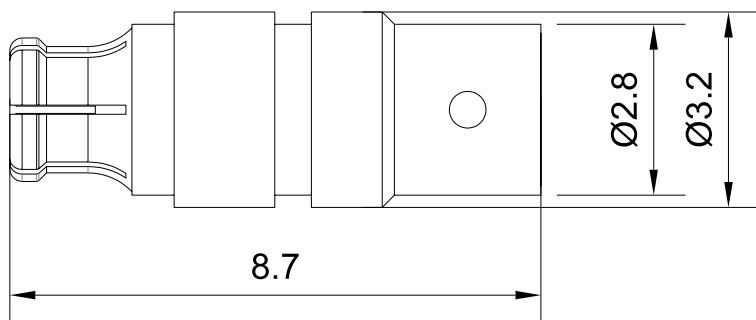


## GPPO (Mini-SMP) Female Connector for .086" Series Cables | DC - 65GHz

**GPPO-KB2-3**



Dimensions are in mm



### Product Configuration

Connector Series	GPPO(Mini-SMP)
Connector Polarity	Standard
Connector Gender	Female
Body Style	Straight
Termination Type	Coax
Connector Impedance (Ohm)	50
Mount Method	None

### Mechanical Data

Min. Mating Cycles	≥500
Weight (g)	0.2 g
Body Material	Beryllium Copper
Body Plating	Gold

### Electrical Specifications

Frequency	DC - 65GHz
VSWR / Return Loss	1.1 to 26.5GHz, 1.32 to 50GHz, 1.5 to 65GHz
Insertion Loss	≤ 0.1 x Sqrt.(f_GHz)

### Environmental Specifications

RoHS Compliant	Yes
Operating Temperature Range	-55 °C to +165 °C
MIL/STD	N/A