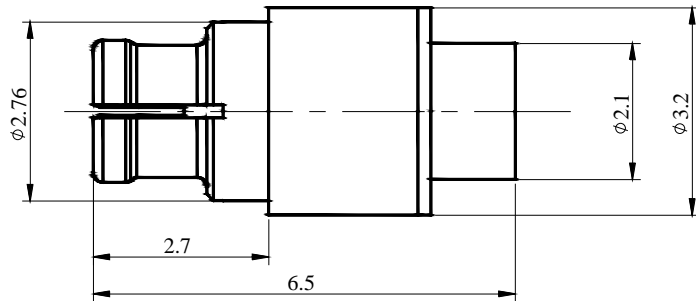


GPPO (Mini-SMP) Female Connector for .047' Series Cables, DC - 65GHz P/N: FR1-GPPO-KB1



Dimensions are in mm



Product Configuration

Body Style	Straight
Connector Series	GPPO(Mini-SMP)
Connector Polarity	Standard
Connector Gender	Female
Termination Type	Coax
Connector Impedance (Ohm)	50
Mount Method	None

Electrical Specifications

Frequency	DC-65GHz
VSWR	1.2 to 18GHz, 1.4 to 40GHz, 1.9 to 65GHz
Insertion Loss	$\leq 0.1 \times \sqrt{f_GHz}$

Mechanical Data

Mating Cycles, Min	≥ 500
Weight	2 g
Body Material	Beryllium Copper
Body Plating	Gold

Environmental Specifications

RoHS Compliant	Yes
Operating Temperature Range	-40°C to +155°C
MIL/STD	N/A