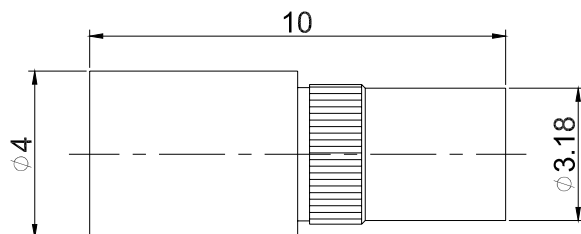


GPPO(Mini-SMP) Male to GPPO(Mini-SMP) Male Pierce through a wall Straight **P/N: GPPO-JJS**  
Precision Adapter | DC to 65GHz



Dimensions are in mm



## Product Configuration

	Connector 1	Connector 2
Connector Series	GPPO(Mini-SMP)	GPPO(Mini-SMP)
Connector Polarity	Standard	Standard
Connector Gender	Male	Male
Connector Impedance (Ohm)	50	50
Connector Body Material	Stainless Steel	Stainless Steel
Connector Body Plating	Passivated	Passivated
Body Style	Straight	Straight

## Electrical Specifications

Frequency	DC - 65GHz
VSWR / Return Loss	1.35
Insertion Loss	$\leq 0.1 \times \text{Sqrt.}(f\_GHz)$

## Mechanical Data

Min. Mating Cycles	$\geq 500$
--------------------	------------

## Enviromental Specifications

RoHS Compliant	Yes
Operating Temperature Range	-45°C to +125°C