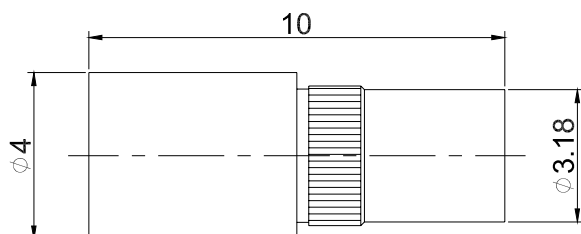


## GPPO(Mini-SMP) Male to GPPO(Mini-SMP) Male Pierce through a wall Straight Precision Adapter | DC to 65GHz

P/N: FR1-GPPO-JJ



Dimensions are in mm



### Product Configuration

	Connector 1	Connector 2
Connector Series	GPPO(Mini-SMP)	GPPO(Mini-SMP)
Connector Polarity	Standard	Standard
Connector Gender	Male	Male
Connector Impedance (Ohm)	50	50
Body Style	Straight	Straight
Connector Body Material	Stainless Steel	Stainless Steel
Connector Body Plating	Passivated	Passivated
Mount Method	Pierce through a wall	Pierce through a wall

### Electrical Specifications

Frequency	DC - 65GHz
VSWR / Return Loss	1.35
Insertion Loss	$\leq 0.1 \times \text{Sqrt.}(f\_GHz)$

### Enviromental Specifications

RoHS Compliant	Yes
Operating Temperature Range	-45°C to +125°C