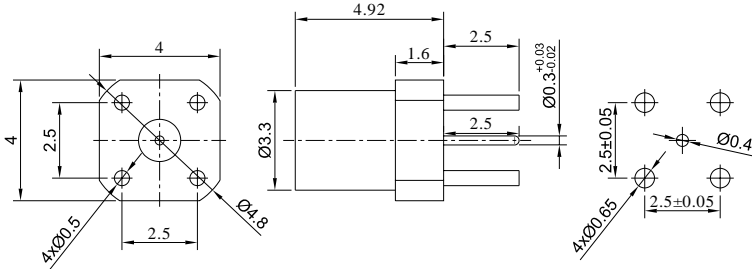


GPPO (Mini-SMP) Male Full Detent Connector PCB Mount Soldering | DC - 40GHz **GPPO-JHD**



Dimensions are in mm



Product Configuration

Connector Series	GPPO(Mini-SMP)
Connector Polarity	Standard
Connector Gender	Male
Body Style	Straight
Termination Type	PCB
Connector Impedance (Ohm)	50
Mount Method	None

Mechanical Data

Min. Mating Cycles	≥500
Weight (g)	0.4 g
Body Material	Brass
Body Plating	Gold

Electrical Specifications

Frequency	DC - 40GHz
VSWR / Return Loss	1.5
Insertion Loss	≤ 0.1 x Sqrt.(f_GHz)

Environmental Specifications

RoHS Compliant	Yes
Operating Temperature Range	-55 °C to +165 °C