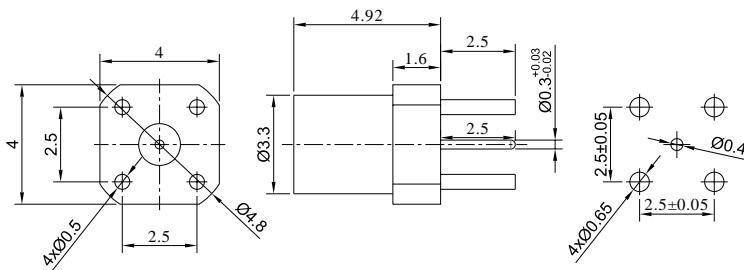


GPPO (Mini-SMP) Male Smooth Connector PCB Mount Soldering, DC - 40GHz

P/N: FR2-GPPO-JHD-S



Dimensions are in mm



Product Configuration

| | |
|---------------------------|----------------|
| Body Style | Straight |
| Connector Series | GPPO(Mini-SMP) |
| Connector Polarity | Standard |
| Connector Gender | Male |
| Termination Type | PCB |
| Connector Impedance (Ohm) | 50 |
| Mount Method | None |

Electrical Specifications

| | |
|----------------|--|
| Frequency | DC-40GHz |
| VSWR | 1.5 |
| Insertion Loss | $\leq 0.1 \times \text{Sqrt.}(f_GHz)$ |

Mechanical Data

| | |
|--------------------|------------|
| Mating Cycles, Min | ≥ 500 |
| Weight | 0.4 g |
| Body Material | Brass |
| Body Plating | Gold |

Environmental Specifications

| | |
|-----------------------------|-------------------|
| RoHS Compliant | Yes |
| Operating Temperature Range | -55 °C to +165 °C |
| MIL/STD | N/A |