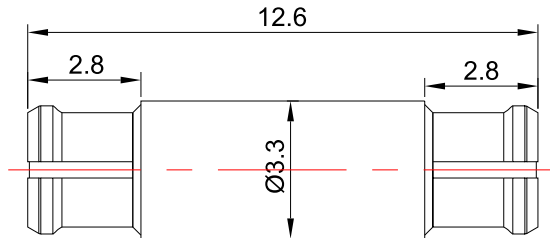


GPO(SMP) Female-GPO(SMP) Female Adapter | DC-18GHz | Length 12.6mm P/N: GPO-KK126



Dimensions are in mm



Product Configuration

	Connector 1	Connector 2
Connector Series	GPO(SMP)	GPO(SMP)
Connector Polarity	Standard	Standard
Connector Gender	Female	Female
Connector Impedance (Ohm)	50	50
Connector Body Material	CuBe	CuBe
Connector Body Plating	Gold	Gold
Body Style	Straight	Straight

Electrical Specifications

Frequency	DC to 18 GHz
VSWR / Return Loss	1.25
Insertion Loss	$\leq 0.1 \times \text{Sqrt.}(f_GHz)$

Mechanical Data

Min. Mating Cycles	≥ 500
--------------------	------------

Environmental Specifications

RoHS Compliant	Yes
Operating Temperature Range	-45°C to +85°C