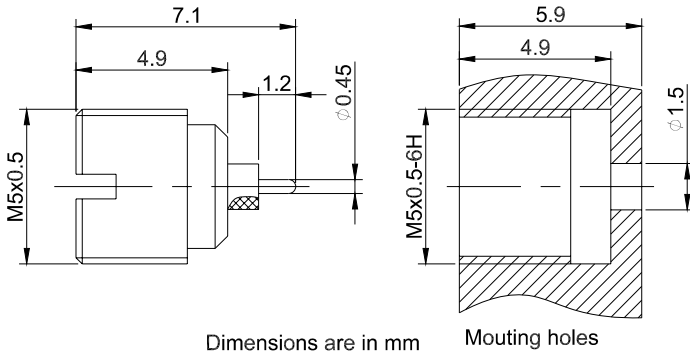


GPO(SMP) Male Bulkhead Mount Connector for PCB | DC - 26.5GHz | Limited Detent

P/N: FR2-GPO-JYD12G



Product Configuration

Body Style	Straight
Connector Series	GPO(SMP)
Connector Polarity	Standard
Connector Gender	Male
Termination Type	PCB
Connector Impedance (Ohm)	50
Mount Method	Bulkhead

Electrical Specifications

Frequency	DC - 26.5GHz
VSWR / Return Loss	1.4
Insertion Loss	$\leq 0.1 \times \text{Sqrt.}(f_GHz)$

Mechanical Data

Min. Mating Cycles	≥ 500
Body Material	Stainless Steel
Body Plating	Passivated

Environmental Specifications

RoHS Compliant	Yes
Operating Temperature Range	-40° to $+165^{\circ}$