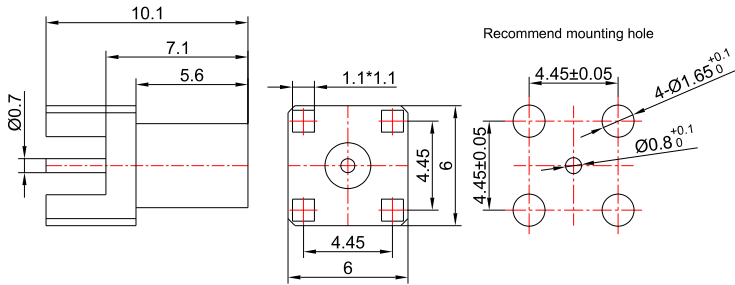
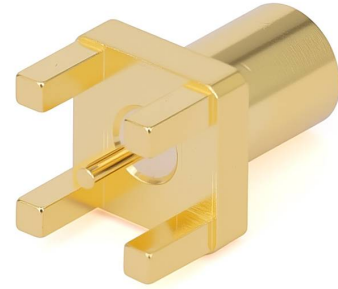


GPO (SMP) Male Limited Detent Connector PCB Mount Soldering | DC - 26.5GHz

P/N: FR2-GPO-JHD2-1



Dimensions are in mm



Product Configuration

Body Style	Straight
Connector Series	GPO(SMP)
Connector Polarity	Standard
Connector Gender	Male
Termination Type	PCB
Connector Impedance (Ohm)	50
Mount Method	None

Electrical Specifications

Frequency	DC - 26.5GHz
VSWR / Return Loss	15dB
Insertion Loss	$\leq 0.05 \times \text{Sqrt}(f_GHz)$

Mechanical Data

Min. Mating Cycles	≥ 500
Body Material	Brass
Body Plating	Gold

Environmental Specifications

RoHS Compliant	Yes
Operating Temperature Range	-55°C to $+125^\circ\text{C}$