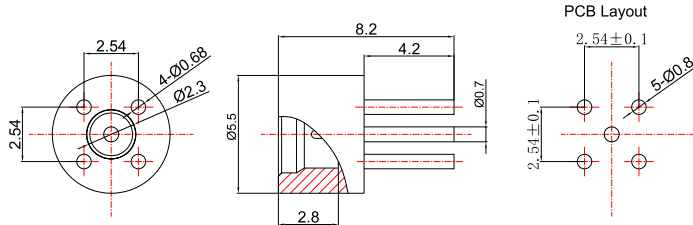


## GPO(SMP) Male End Launch Connector | DC-18GHz | Smooth

P/N: FR2-GPO-JHD15-S



Dimensions are in mm



### Product Configuration

Body Style	Straight
Connector Series	GPO(SMP)
Connector Polarity	Standard
Connector Gender	Male
Termination Type	PCB
Connector Impedance (Ohm)	50
Mount Method	None

### Electrical Specifications

Frequency	DC to 18 GHz
VSWR / Return Loss	1.3
Insertion Loss	≤ 0.05 x Sq. (f_GHz)

### Mechanical Data

Min. Mating Cycles	≥500
Body Material	Brass
Body Plating	Gold

### Environmental Specifications

RoHS Compliant	Yes
Operating Temperature Range	-55°C to +125°C