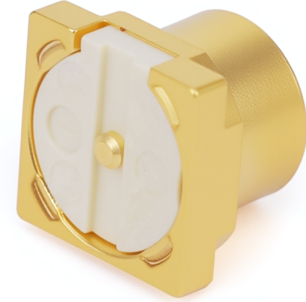
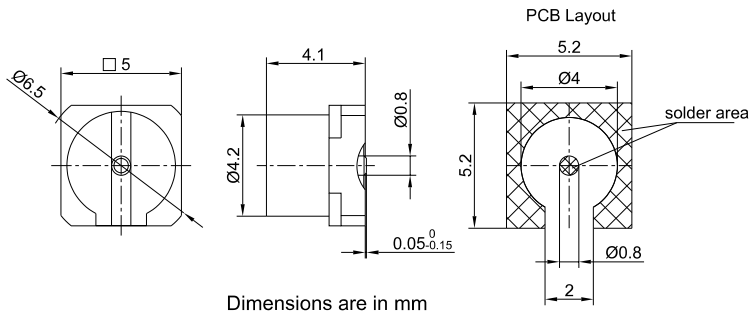


GPO(SMP) Male Connector | SMT PCB Mount | Limited Detent | DC-22GHz

GPO-JHD11



Product Configuration

Connector Series	GPO(SMP)
Connector Polarity	Standard
Connector Gender	Male
Body Style	Straight
Termination Type	PCB
Connector Impedance (Ohm)	50
Mount Method	None

Mechanical Data

Min. Mating Cycles	≥500
Body Material	Brass
Body Plating	Gold

Electrical Specifications

Frequency	DC - 22GHz
VSWR / Return Loss	1.5
Insertion Loss	≤ 0.05 x Sqrt.(f_GHz)

Environmental Specifications

RoHS Compliant	Yes
Operating Temperature Range	-65°C to +155°C