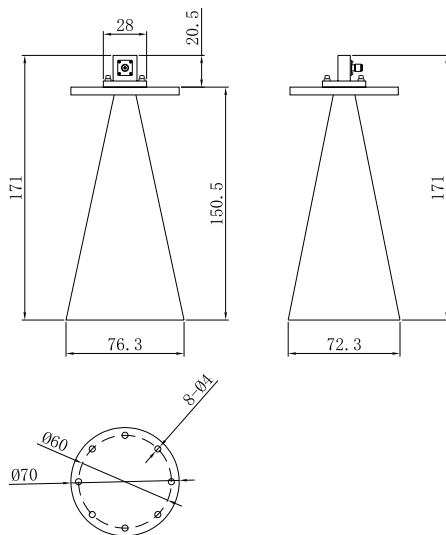


Waveguide Standard Horn Antenna Operating from 18 GHz to 40 GHz with a Nominal 20 dBi Gain | 2.92mm Female Input Connector

P/N: GHA180400-292F-20



Dimensions are in mm



## Product Configuration

Connector Series	2.92mm
Connector Polarity	Standard
Connector Gender	Female
Connector Impedance (Ohm)	50
Antenna Type	Horn

## Mechanical Data

Body Material	Aluminum
Colour	Grey

## Electrical Specifications

Return Loss or VSWR Input	2.5
Directionality	Directional
Polarization	Linear
Number of Bands	Single
Gain, Typical (dBi)	20
Frequency Range	18GHz - 40GHz

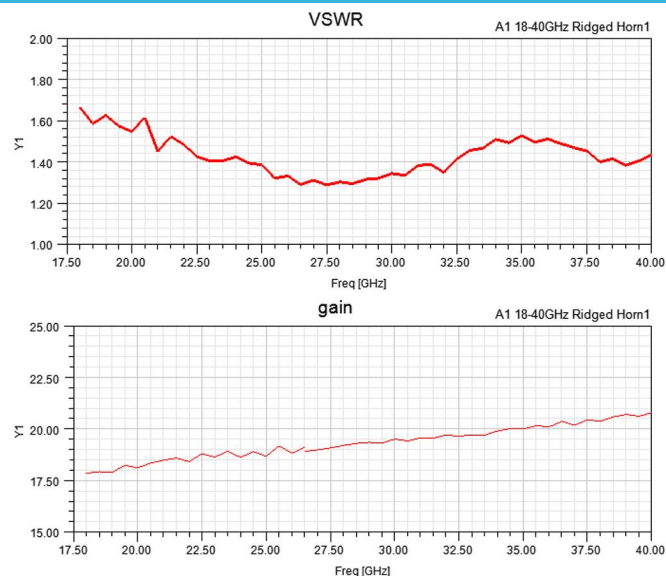
## Enviromental Specifications

RoHS Compliant	Yes
Operating Temperature Range	-40C° to +65C°

## Waveguide Standard Horn Antenna Operating from 18 GHz to 40 GHz with a Nominal 20 dBi Gain | 2.92mm Female Input Connector

P/N: GHA180400-292F-20

### VSWR Test Figure



### Bandwidth & Gain Table

Frequency(GHz)	Gain(dBi)
18	17.9
20	18.2
22	18.4
24	18.7
26	19.0
28	19.1
30	19.4
32	19.5
34	19.9
36	20.1
38	20.5
40	20.7

### Bandwidth & Gain Test Figures

