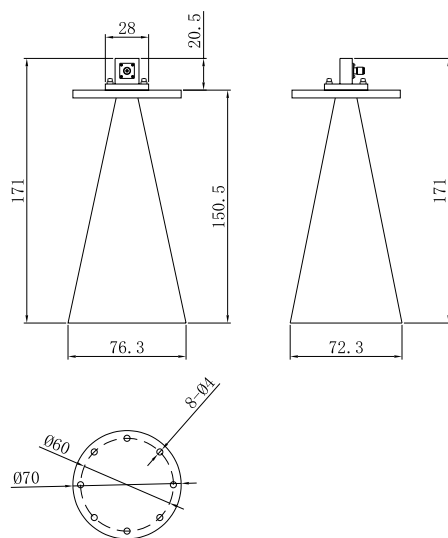


Waveguide Standard Horn Antenna Operating from 18 GHz to 40 GHz with a Nominal 20 dBi Gain | 2.92mm Female Input Connector

P/N: GHA180400-292F-20



Dimensions are in mm



Product Configuration

Connector Series	2.92mm
Connector Polarity	Standard
Connector Gender	Female
Connector Impedance (Ohm)	50
Antenna Type	Horn

Mechanical Data

Body Material	Aluminum
Colour	Grey

Electrical Specifications

Return Loss or VSWR Input	2.5
Directionality	Directional
Polarization	Linear
Number of Bands	Single
Gain, Typical (dBi)	20
Frequency Range	18GHz - 40GHz

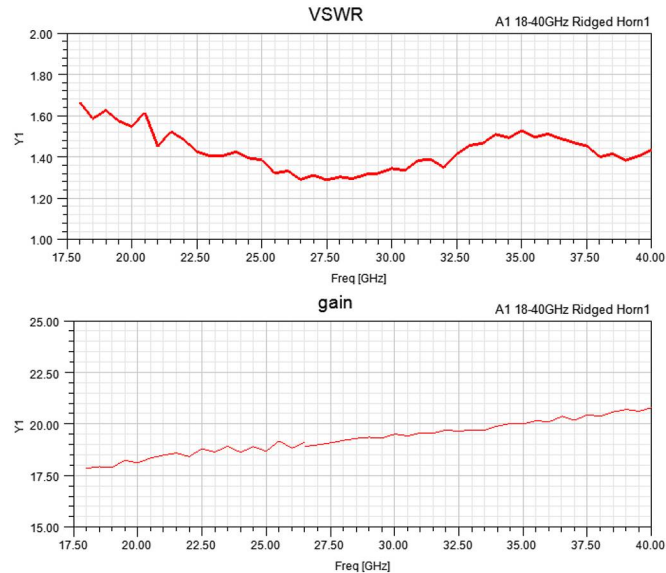
Environmental Specifications

RoHS Compliant	Yes
Operating Temperature Range	-40°C to +65°C

Waveguide Standard Horn Antenna Operating from 18 GHz to 40 GHz with a Nominal 20 dBi Gain | 2.92mm Female Input Connector

P/N: GHA180400-292F-20

VSWR Test Figure



Bandwidth & Gain Table

Frequency(GHz)	Gain(dBi)
18	17.9
20	18.2
22	18.4
24	18.7
26	19.0
28	19.1
30	19.4
32	19.5
34	19.9
36	20.1
38	20.5
40	20.7

Bandwidth & Gain Test Figures

