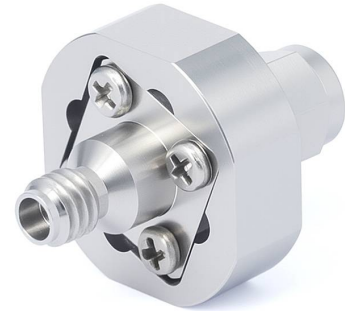
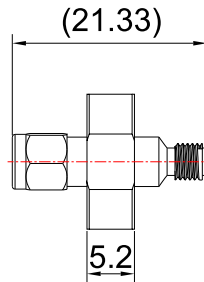
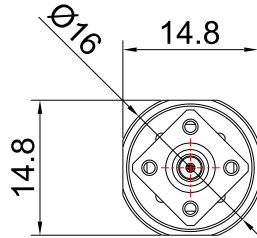


DC Block on Inner Conductor 1.0mm Male to 1.0mm Female | 300 KHz P/N: FR5-GDCB-110G-10-JK to 110 GHz | 30V



Dimensions are in mm

Product Configuration

Connector-In Series	1.0mm
Connector-In Polarity	Standard
Connector-In Gender	Female
Connector-In Impedance (Ohm)	50
Connector-Out Series	1.0mm
Connector-Out Polarity	Standard
Connector-Out Gender	Male
Connector-Out Impedance (Ohm)	50
Block Type	Inner

Mechanical Data

Min. Mating Cycles	≥500
Body Material	Stainless Steel
Body Plating	Passivated
Connector In Body Material	Stainless Steel
Connector In Body Plating	Passivated
Connector Out Body Material	Stainless Steel
Connector Out Body Plating	Passivated

DC Block on Inner Conductor 1.0mm Male to 1.0mm Female | 300 KHz P/N: [FR5-GDCB-110G-10-JK](#)
to 110 GHz | 30V

Electrical Specifications

VSWR / Return Loss	<2.2
Insertion Loss	≤ 2dB
Power, Max Input (Watts)	1
Frequency Range	300KHz-110GHz
Voltage, DC Max (Volts)	+30

Environmental Specifications

RoHS Compliant	Yes
----------------	-----