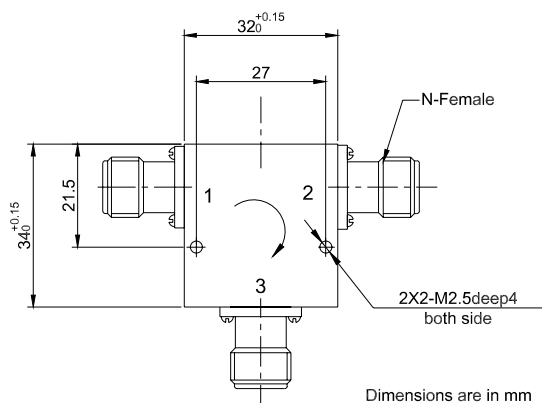


Circulator with 15dB Isolation from 2GHz to 6GHz | 20 Watts with N Female

P/N: GCN020060-20W-NF



Product Configuration

Connector 1 Series	N
Connector 2 Series	N
Connector 1 Polarity	Standard
Connector 2 Polarity	Standard
Connector 1 Gender	Female
Connector 2 Gender	Female
Connector 1 Impedance (Ohm)	50
Connector 2 Impedance (Ohm)	50

Mechanical Data

Connector 1 Body Material	Brass
Connector 1 Body Plating	Nickel
Connector 2 Body Material	Brass
Connector 2 Body Plating	Nickel
Weight (g)	140
Body Material	Aluminum
Body Plating	Oxidation
External body material	Nickel plated iron

Circulator with 15dB Isolation from 2GHz to 6GHz | 20 Watts with N Female

P/N: GCN020060-20W-NF

Electrical Specifications

VSWR / Return Loss	≤1.45
Insertion Loss	≤ 0.8dB
Power, Max Input (Watts)	20
Frequency Range	2GHz~6GHz
Isolation Min.(dB)	15
Direction	Clockwise:1→2→3

Enviromental Specifications

RoHS Compliant	Yes
Operating Temperature Range	0°C to +60 °C
Storage Temperature Range	-40 °C to +85 °C

Test Data

