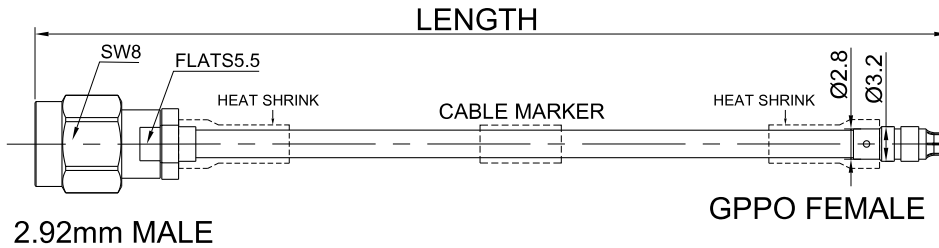


P/N: FR712-292MGPPF-XXX

2.92mm Male to GPPO(Mini-SMP) Female Cable Assembly | .086" Semi-Flexible Coax Cable with FEP Jacket | DC - 40GHz



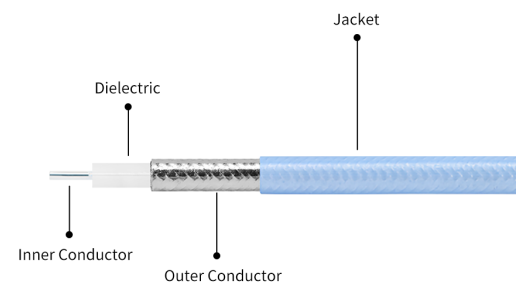
Dimensions are in mm

## Connectors Configuration

	Connector 1	Connector 2
Connector Series	2.92mm	GPPO(Mini-SMP)
Connector Polarity	Standard	Standard
Connector Gender	Male	Female
Connector Impedance (Ohm)	50	50
Connector Body Style	Straight	Straight
Connector Body Material	Stainless Steel	Beryllium Copper
Connector Body Plating	Passivated	Gold

## Cable Configuration

Cable Type	.086" Semi-Flexible cable
Cable Impedance (Ohm)	50
Inner Conductor Material	Silver Plated Copper Covered Steel (SCCS)
Dielectric Material	Solid extruded PTFE
Shield Layer 1 Material	Tin Plated Copper
Jacket Material	FEP
Cable Diameter (mm)	2.54
Cable Color	Blue
Minimum Bend Radius (mm)	6
Capacitance (pF/m)	94
Velocity of Propagation	71%
Shielding Effectiveness	< -110dB @ 1GHz



## Electrical Data

Electrical Specifications for Different Length				
Length (mm)	Length Tolerance (mm)	Frequency	VSWR / Return Loss	Insertion Loss $\leq$ (dB)
100	$\pm 3$	DC - 40GHz	14dB	1.32
150	$\pm 3$			1.63
200	$\pm 3$			1.94
250	$\pm 3$			2.25
300	$\pm 5$			2.56
400	$\pm 5$			3.21
500	$\pm 5$			3.82

## Environmental Specifications

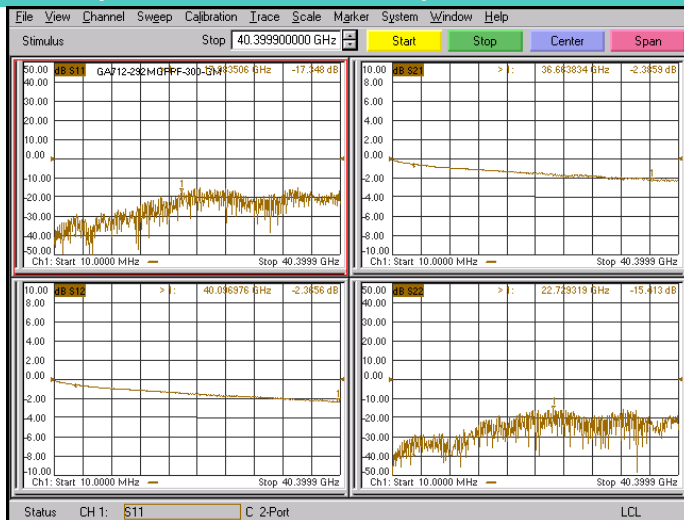
RoHS Compliant

Yes

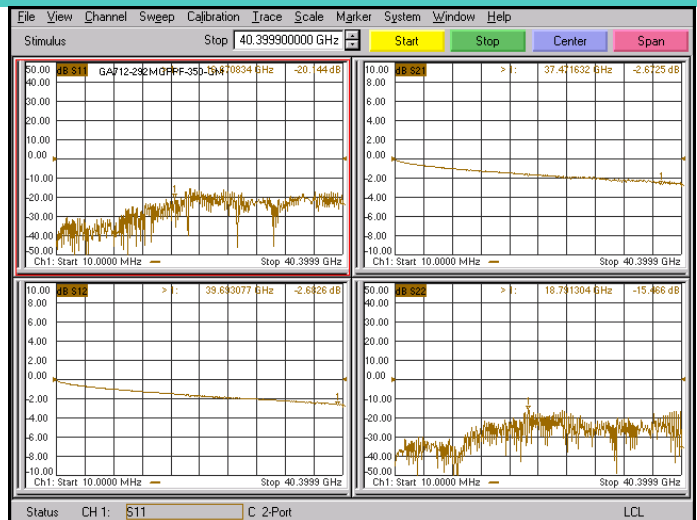
Operating Temperature Range

-40°C to +125°C

## Test Report for Cable assembly



\*Note: Test Cable Assembly Length = 300 mm



\*Note: Test Cable Assembly Length = 350 mm

## Revision History

Version	Description	Prepared By	Approved By	Date
V1.0	Initial release	Grimm	Hebe	2024-01-01