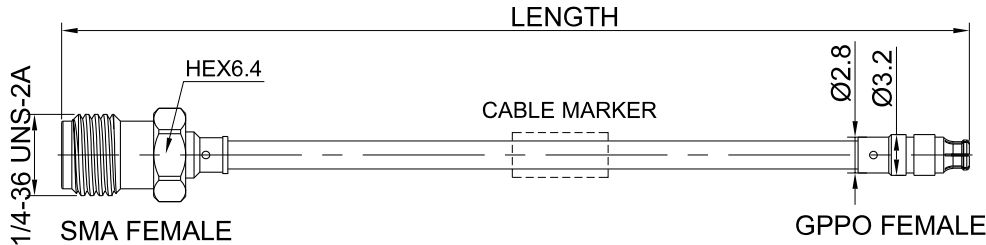


P/N: GA710-SMFGPPF-XXX

**SMA Female to GPPO (mini-SMP) Right Angle Female Cable Assembly | .086" Semi-Rigid GUT-085 (Copper) Coax Cable | DC - 18GHz**



Dimensions are in mm

**Connectors Configuration**

	Connector 1	Connector 2
Connector Series	SMA	GPPO(Mini-SMP)
Connector Polarity	Standard	Standard
Connector Gender	Female	Female
Connector Impedance (Ohm)	50.0	50.0
Connector Body Style	Straight	Straight
Connector Body Material	Brass	CuBe
Connector Body Plating	Gold	Gold

**Cable Configuration**

Cable Type	.086" Semi-rigid Cable (Copper)
Cable Impedance (Ohm)	50
Inner Conductor Material	Silver plated copperweld
Dielectric Material	Solid PTFE
Shield Layer 1 Material	Copper
Cable Diameter (mm)	2.2
Cable Color	Cooper
Minimum Bend Radius (mm)	6mm
Capacitance (pF/m)	95
Velocity of Propagation	70%
Shielding Effectiveness	<-120dB @ 1GHz



P/N: GA710-SMFGPPF-XXX

SMA Female to GPPO (mini-SMP) Right Angle Female Cable Assembly | .086" Semi-Rigid GUT-085 (Copper) Coax Cable | DC - 18GHz

**Electrical Data**

Electrical Specifications for Different Length				
Length (mm)	Length Tolerance (mm)	Frequency	VSWR / Return Loss	Insertion Loss ≤ (dB)
100	±3	DC - 18GHz	14dB to 18GHz	0.83
150	±3			1.0
200	±3			1.16
250	±3			1.33
300	±5			1.49
400	±5			1.82
500	±5			2.15

**Environmental Specifications**

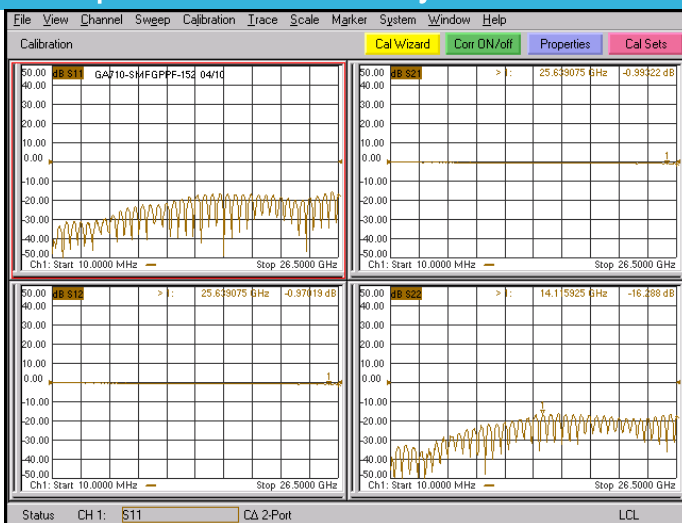
RoHS Compliant

Yes

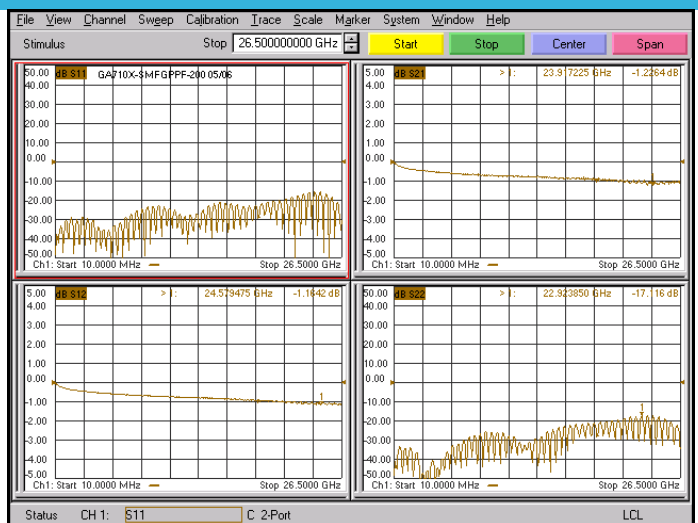
Operating Temperature Range

-45 °C to +85 °C

**Test Report for Cable assembly**



\*Note: Test Cable Assembly Length = 152 mm



\*Note: Test Cable Assembly Length = 200 mm