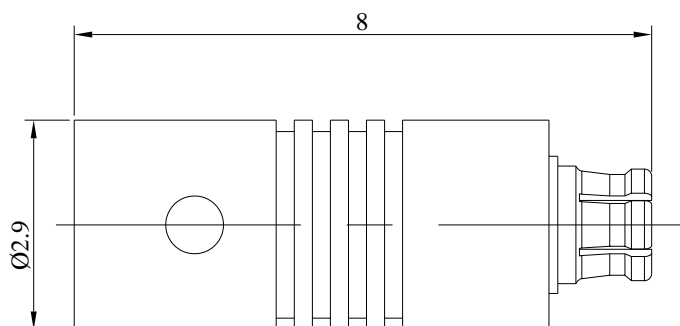


G3PO(SMPS) Female Connector Solder Attachment For 086 Series, DC-100G

G3PO-KB2



Dimensions are in mm



Product Configuration Cable

Connector Series	G3PO(SMPS)
Connector Polarity	Standard
Connector Gender	Female
Body Style	Straight
Termination Type	Coax
Connector Impedance (Ohm)	50
Mount Method	None

Mechanical Data

Min. Mating Cycles	≥500
Body Material	Beryllium Copper
Body Plating	Gold

Electrical Specifications

Frequency	DC - 67GHz
VSWR / Return Loss	10dB
Insertion Loss	≤ 0.1 x Sqrt.(f_GHz)

Enviromental Specifications

RoHS Compliant	Yes
Operating Temperature Range	-55 °C to +165 °C