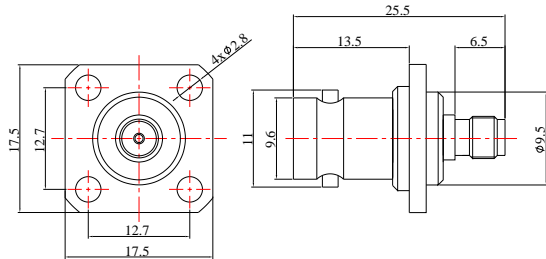


BNC Female to SMA Female 4 Hole Flange Straight Adapter | DC to 3GHz

P/N: FR1-BNC/SMA-KFK



Dimensions are in mm



Product Configuration

	Connector 1	Connector 2
Connector Series	BNC	SMA
Connector Polarity	Standard	Standard
Connector Gender	Female	Female
Connector Impedance (Ohm)	50	50
Body Style	Straight	Straight
Connector Body Material	Brass	Brass
Connector Body Plating	Tri-Metal	Tri-Metal
Mount Method	4 Hole Flange	4 Hole Flange

Electrical Specifications

Frequency	DC - 3GHz
VSWR / Return Loss	1.25 to 3GHz

Mechanical Data

Min. Mating Cycles	≥500
--------------------	------

Environmental Specifications

RoHS Compliant	Yes
Operating Temperature Range	-55 °C to +165 °C
MIL/STD	N/A