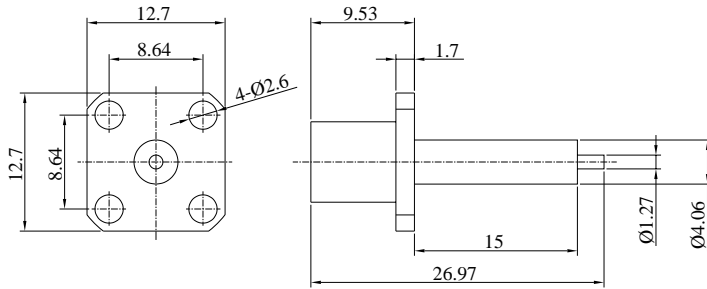
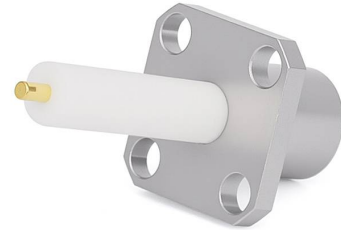


BMA Female Connector with 4 Holes Flange | Hole Spacing 8.64mm | Through-plate **BMA-KFD0163**
PTFE Diameter 4.06mm and Length 15mm | DC - 18GHz



Dimensions are in mm



Product Configuration

Connector Series	BMA
Connector Polarity	Standard
Connector Gender	Female
Body Style	Straight
Termination Type	Field Replaceable Contact
Connector Impedance (Ohm)	50
Mount Method	4 Hole Flange

Mechanical Data

Min. Mating Cycles	≥500
Body Material	Stainless Steel
Body Plating	Passivated

Electrical Specifications

Frequency	DC - 18GHz
VSWR / Return Loss	1.25 to 18GHz
Insertion Loss	≤ 0.06 x Sqrt.(f_GHz)
RF Leakage	90dB

Environmental Specifications

RoHS Compliant	Yes
Operating Temperature Range	-55 °C to +165 °C
MIL/STD	N/A