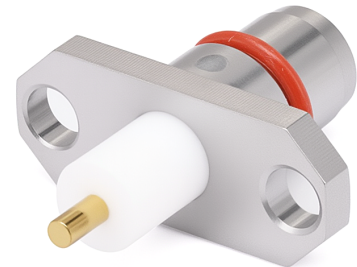


**BMA Female Connector with 2 Holes Flange, Hole Spacing 12.2mm, Through-plate PTFE Diameter 4.06mm and Length 5mm, DC - 22GHz**

**P/N: FR2-BMA-JFD0411**



## Product Configuration

Body Style	Straight
Connector Series	BMA
Connector Polarity	Standard
Connector Gender	Male
Termination Type	Field Replaceable Contact
Connector Impedance (Ohm)	50
Mount Method	2 Hole Flange

## Electrical Specifications

Frequency	DC to 22GHz
VSWR	1.25 to 22GHz
Insertion Loss	$\leq 0.07 \times \text{Sqrt.}(f\_Ghz)$
RF Leakage	90dB

## Mechanical Data

Min. Mating Cycles	$\geq 500$
Body Material	Stainless Steel
Body Plating	Passivated

## Environmental Specifications

RoHS Compliant	Yes
Operating Temperature Range	-55 °C to +125 °C
MIL/STD	N/A