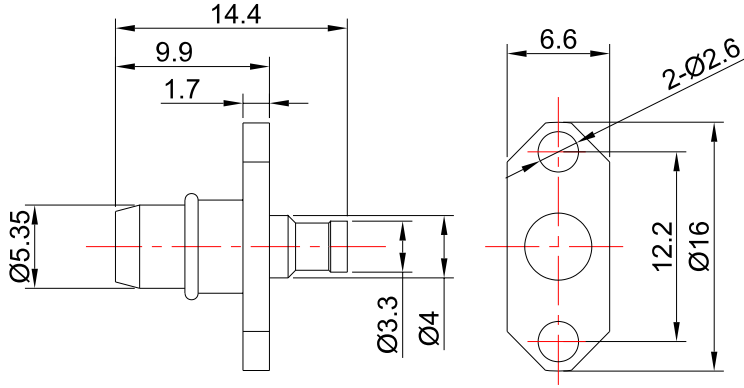


BMA Male Connector for RG405 or .086" Cable | 4 Holes Flange | DC-18GHz

**BMA-JFB2**



Dimensions are in mm

**Product Configuration**

Connector Series	BMA
Connector Polarity	Standard
Connector Gender	Male
Body Style	Straight
Termination Type	Coax
Connector Impedance (Ohm)	50
Mount Method	2 Hole Flange

**Mechanical Data**

Min. Mating Cycles	≥500
Body Material	Brass
Body Plating	Gold

**Electrical Specifications**

Frequency	DC - 18GHz
VSWR / Return Loss	1.30 to 18GHz
Insertion Loss	≤ 0.1 x Sqrt.(f_GHz)
RF Leakage	90dB

**Environmental Specifications**

RoHS Compliant	Yes
Operating Temperature Range	-40°C to +125°C