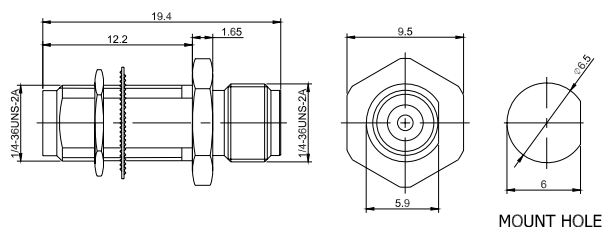


2.92mm Female to 2.92mm Female Bulkhead Straight Precision Adapter | DC- 40GHz P/N: 2.92-KYKG-1



Dimensions are in mm



Product Configuration

	Connector 1	Connector 2
Connector Series	2.92mm	2.92mm
Connector Polarity	Standard	Standard
Connector Gender	Female	Female
Connector Impedance (Ohm)	50	50
Connector Body Material	Stainless Steel	Stainless Steel
Connector Body Plating	Passivated	Passivated
Body Style	Straight	Straight
Mount Method	Bulkhead	Bulkhead

Electrical Specifications

Frequency	DC - 40GHz
VSWR / Return Loss	1.2
Insertion Loss	$\leq 0.04 \times \text{Sqrt.}(f_GHz)$

Mechanical Data

Min. Mating Cycles	≥ 500
Weight (g)	4.3 g

Environmental Specifications

RoHS Compliant	Yes
Operating Temperature Range	-45°C to +125°C
MIL/STD	N/A