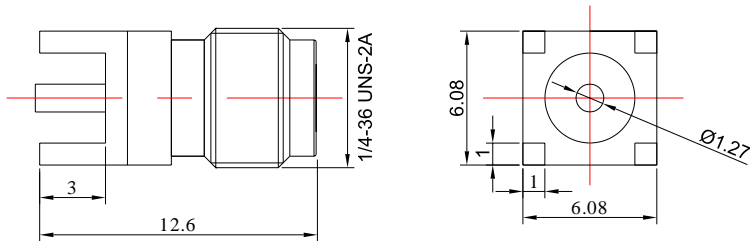


2.92mm Female Connector PCB Mount Soldering, DC - 40GHz

P/N: FR2-2.92-KHD100



Dimensions are in mm

Product Configuration

| | |
|---------------------------|----------|
| Body Style | Straight |
| Connector Series | 2.92mm |
| Connector Polarity | Standard |
| Connector Gender | Female |
| Termination Type | PCB |
| Connector Impedance (Ohm) | 50 |
| Mount Method | None |

Electrical Specifications

| | |
|----------------|---|
| Frequency | DC-40GHz |
| VSWR | 1.2 |
| Insertion Loss | $\leq 0.05 \times \text{Sqrt.}(f_GHz)$ |

Mechanical Data

| | |
|--------------------|------------|
| Min. Mating Cycles | ≥ 500 |
| Weight | 1.68 g |
| Body Material | Brass |
| Body Plating | Gold |

Environmental Specifications

| | |
|-----------------------------|-------------------|
| RoHS Compliant | Yes |
| Operating Temperature Range | -55 °C to +165 °C |
| MIL/STD | N/A |