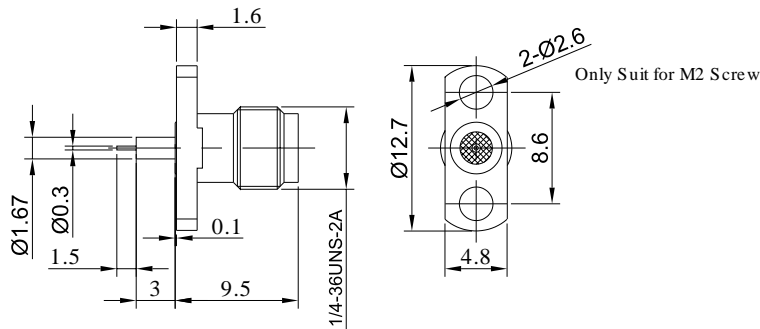


2.92mm Female Connector with 2 Hole Flange | Hole Spacing 8.6mm | Through-plate Metal Diameter 1.67mm and Length 3mm | DC - 40GHz

2.92-KFD0705



Dimensions are in mm



Product Configuration

Connector Series	2.92mm
Connector Polarity	Standard
Connector Gender	Female
Body Style	Straight
Termination Type	Terminal
Connector Impedance (Ohm)	50
Mount Method	2 Hole Flange

Mechanical Data

Min. Mating Cycles	≥500
Weight (g)	1.56 g
Body Material	Stainless Steel
Body Plating	Passivated

Electrical Specifications

Frequency	DC-40GHz
VSWR / Return Loss	1.15
Insertion Loss	≤0.05 xSqt.(f_GHz)

Enviromental Specifications

RoHS Compliant	Yes
Operating Temperature Range	-55 °C to +165 °C
MIL/STD	N/A