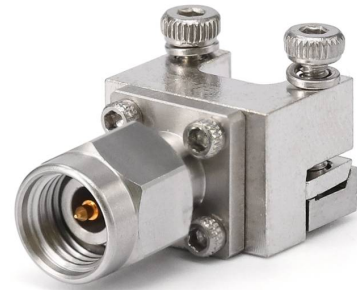
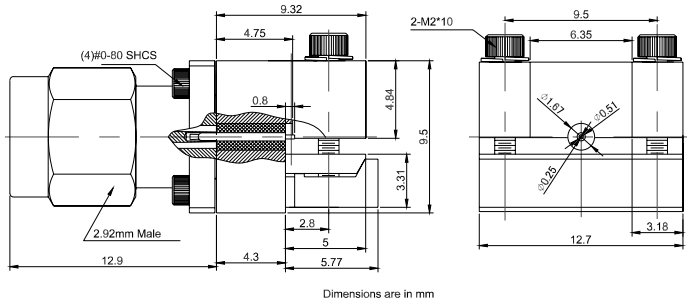


2.92mm Solderless End Launch Male RF Connectors | DC–40GHz |
0.25mm Pin for PCB Contact | 50Ω Edge Mount

P/N: FR2-2.92-JFD0851



Product Configuration

Body Style	Straight
Connector Series	2.92mm
Connector Polarity	Standard
Connector Gender	Male
Termination Type	PCB
Connector Impedance (Ohm)	50
Mount Method	End Launch

Electrical Specifications

Frequency	DC - 40GHz
VSWR / Return Loss	1.25
Insertion Loss	≤ 0.1 x Sqrt.(f_GHz)

Mechanical Data

Min. Mating Cycles	≥500
Weight	10.9 g
Body Material	Brass
Body Plating	Tri-Metal

Environmental Specifications

RoHS Compliant	Yes
Operating Temperature Range	-55 °C to +165 °C