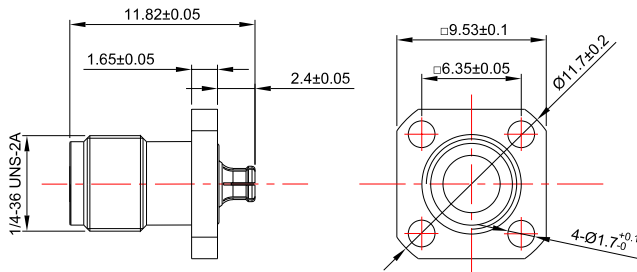
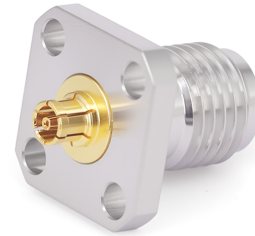


## 2.92mm Female to GPPO(Mini-SMP) Female RF Adapter | 4 Hole Flange Mout | DC-40GHz

P/N: FR1-2.92/GPPO-KFK



Dimensions are in mm



### Product Configuration

	Connector 1	Connector 2
Connector Series	2.92mm	GPPO(Mini-SMP)
Connector Polarity	Standard	Standard
Connector Gender	Female	Female
Connector Impedance (Ohm)	50	50
Body Style	Straight	Straight
Connector Body Material	Stainless Steel	Stainless Steel
Connector Body Plating	Passivated	Passivated
Mount Method	4 Hole Flange	4 Hole Flange

### Electrical Specifications

Frequency	DC - 40GHz
VSWR / Return Loss	1.25
Insertion Loss	≤ 0.1 x Sqrt.(f_GHz)

### Mechanical Data

Min. Mating Cycles	≥500
--------------------	------

### Enviromental Specifications

RoHS Compliant	Yes
Operating Temperature Range	-55 °C to +165 °C