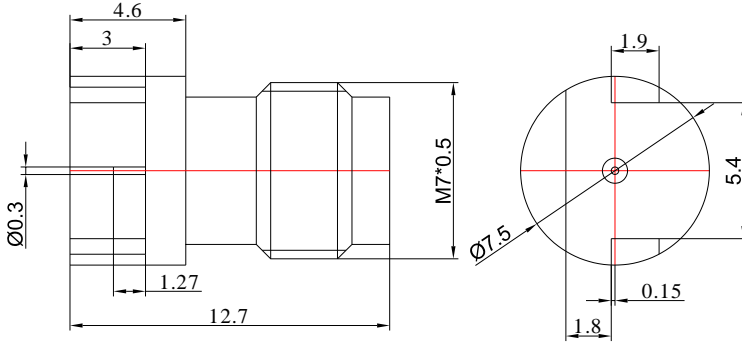


**2.4mm Female Connector End Launch Suit for PCB Thickness 1.68mm,  
DC - 50GHz**

P/N: FR2-2.4-KHD101



Dimensions are in mm

## Product Configuration

Body Style	Straight
Connector Series	2.4mm
Connector Polarity	Standard
Connector Gender	Female
Termination Type	PCB
Connector Impedance (Ohm)	50
Mount Method	End Launch

## Electrical Specifications

Frequency	DC-50GHz
VSWR	1.44
Insertion Loss	≤0.06 xSqt.(f_GHz)

## Mechanical Data

Mating Cycles, Min	≥500
Weight	2.2 g
Body Material	Brass
Body Plating	Gold

## Environmental Specifications

RoHS Compliant	Yes
Operating Temperature Range	-55 °C to +165 °C
MIL/STD	N/A