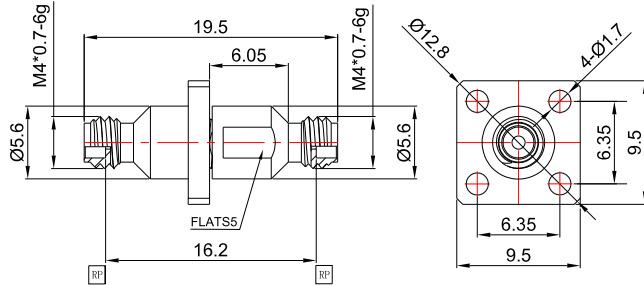
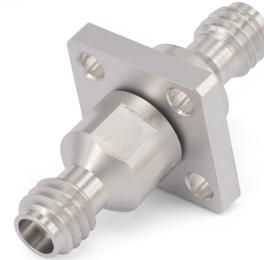


1.0mm Female to 1.0mm Female 4 Hole Flange Straight Precision Adapter | DC-110GHz

P/N: 1.0-KFKS



Dimensions are in mm



Product Configuration

	Connector 1	Connector 2
Connector Series	1.0mm	1.0mm
Connector Polarity	Standard	Standard
Connector Gender	Female	Female
Connector Impedance (Ohm)	50	50
Connector Body Material	CuBe	CuBe
Connector Body Plating	Gold	Gold
Body Style	Straight	Straight
Mount Method	4 Hole Flange	4 Hole Flange

Electrical Specifications

Frequency	DC - 110GHz
VSWR / Return Loss	1.35
Insertion Loss	≤ 0.5

Mechanical Data

Min. Mating Cycles	≥500
--------------------	------

Environmental Specifications

RoHS Compliant	Yes
Operating Temperature Range	-55°C to +85°C

Test Report

