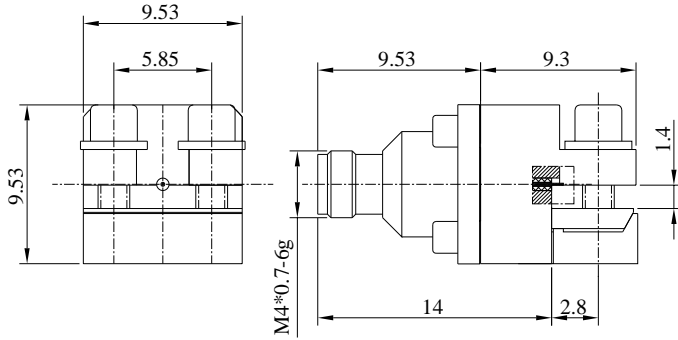
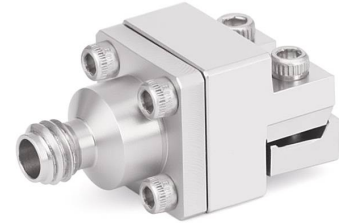


1.0mm Solderless End Launch Female RF Connector | DC–110GHz |
0.127mm Pin for PCB Contact | 50Ω Edge Mount

P/N: FR2-1.0-KFD1523



Dimensions are in mm



Product Configuration

Body Style	Straight
Connector Series	1.0mm
Connector Polarity	Standard
Connector Gender	Female
Termination Type	PCB
Connector Impedance (Ohm)	50
Mount Method	End Launch

Electrical Specifications

Frequency	DC - 110GHz
VSWR / Return Loss	1.45
Insertion Loss	≤ 0.05 x Sqrt.(f_GHz)

Mechanical Data

Min. Mating Cycles	≥500
Body Material	Stainless Steel
Body Plating	Tri-Metal

Environmental Specifications

RoHS Compliant	Yes
Operating Temperature Range	-40° to +165°