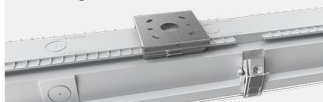




Unique full-length mounting slider



CCT Colour & Wattage switchable



Plug-in on/off Sensor kit



Caiman Quick Connect

Wire a side mains cable entry without needing to open luminaire (product is through-wired)

Features

IK Rating	IK10
IP Rating	IP66
CSP Switchable	Switchable CCT
Sensor Option	MW On-Off
Dimmable Option	No
LED Lifetime	L70 100,000h
Colour Rendering Index	CRI>80
Colour Consistency	SDCM6
Emergency Option	No

Installation information

Install Connector Type	Removeable, moveable, loop in/out
Inrush Current	16A 0.51ms
Construction Material	Polycarbonate Housing (RAL7005), Anti-UV Diffuser
Weight	1.3 - 2.15kg
Ambient Temperature Range	-20°C - 35°C
SELV	No
UK Building Regulations	Part L
Electric Class (1, 2, 3)	1

Photometrics @ 25°C

Product code	Feature l	W	Colour	Beam	lm	lm/W	EM
AC4TWN	4ft (1200mm)	18W	3000K	120°	2590	144	N/A
AC4TWN	4ft (1200mm)	18W	4000K	120°	2775	154	N/A
AC4TWN	4ft (1200mm)	18W	5700K	120°	2775	154	N/A
AC4TWN	4ft (1200mm)	37W	3000K	120°	5180	144	N/A
AC4TWN	4ft (1200mm)	37W	4000K	120°	5550	154	N/A
AC4TWN	4ft (1200mm)	37W	5700K	120°	5550	154	N/A
AC5TWN	5ft (1500mm)	28W	3000K	120°	3920	140	N/A
AC5TWN	5ft (1500mm)	28W	4000K	120°	4200	150	N/A
AC5TWN	5ft (1500mm)	28W	5700K	120°	4200	150	N/A
AC5TWN	5ft (1500mm)	56W	3000K	120°	7840	140	N/A
AC5TWN	5ft (1500mm)	56W	4000K	120°	8400	150	N/A
AC5TWN	5ft (1500mm)	56W	5700K	120°	8400	150	N/A
AC6TWN	6ft (1800mm)	33W	3000K	120°	4690	142	N/A
AC6TWN	6ft (1800mm)	33W	4000K	120°	5025	152	N/A
AC6TWN	6ft (1800mm)	33W	5700K	120°	5025	152	N/A
AC6TWN	6ft (1800mm)	67W	3000K	120°	9380	140	N/A
AC6TWN	6ft (1800mm)	67W	4000K	120°	10050	150	N/A
AC6TWN	6ft (1800mm)	67W	5700K	120°	10050	150	N/A

Wiring information

Cable Required for Connector	N/A
Type of Wiring Required	Parallel

Accessories

ACKITMWS	Microwave Sensor on/off Plug-in Kit (Assembled on demand by Collingwood Production)	Sold Separately
----------	---	-----------------



collingwood

01604 495 151
collingwoodlighting.com

collingwoodled
 /collingwoodlighting
 collingwoodlighting

Guarantee

7 years (product), 5 years (battery), 2 years (on-site)

Features & benefits

CCT switchable between 3000K, 4000K & 5700K

Wattage Switchable

IP66 for external use

Unique full length mounting slider allows complete freedom of mounting positions

Quick connect through-wired version for side entry to avoid opening the product

Versabox plug and play microwave sensor kit to automate lights off when no presence is detected

Rear and side housing conduit entry points

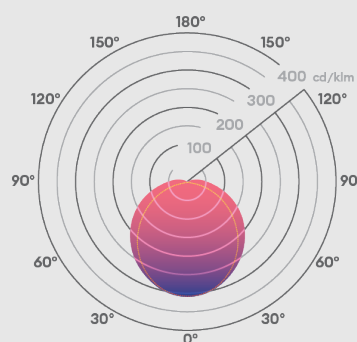
All installation points are marked on the outside of the luminaire to aid accurate pre-drilling, BESA mount accessory (ACBESA) sold separately

Supplied with mounting clips, hanging bracket and compression glands at either end of luminaire

Light source must be assembled
energy efficiency of



Beam angle: 120°



1200mm

1500mm

1800mm